

VIRTUSA BYOD PROGRAM

Self-help Installation Guide for iOS Devices



JULY 24, 2018

VIRTUSA
Version 1.0

1 Virtusa BYOD Program

The Virtusa BYOD (Bring Your Own Device) program allows all Virtusa employees to access corporate data and applications from Apple and Android mobile devices using Intune secure Mobile Device Management (MDM) platform.

The program is intended to provide access to Virtusa information whilst keeping your device secure without interfering with your personal information and settings. It also provides you the additional feature of wiping the device in situations where it is lost or stolen.

2 Prerequisites for Enrollment

- Devices should not be rooted/jail broken
- Devices should not be enrolled with any other Mobile Device Management (MDM) solution
- Minimum of 600 MB free space should be available in the device prior installation
- An iCloud ID is required and Wi-Fi connectivity is preferred for enrollment
- Configuration time will take around 15 minutes

3 Virtusa BYOD Portal

The Virtusa BYOD portal provides a comprehensive view on the MDM solution provided by Virtusa for its employees. This portal will guide and assist employees in the entire journey of enrolling, managing and unenrolling devices.

You can access this site by,

- Scanning the below QR code

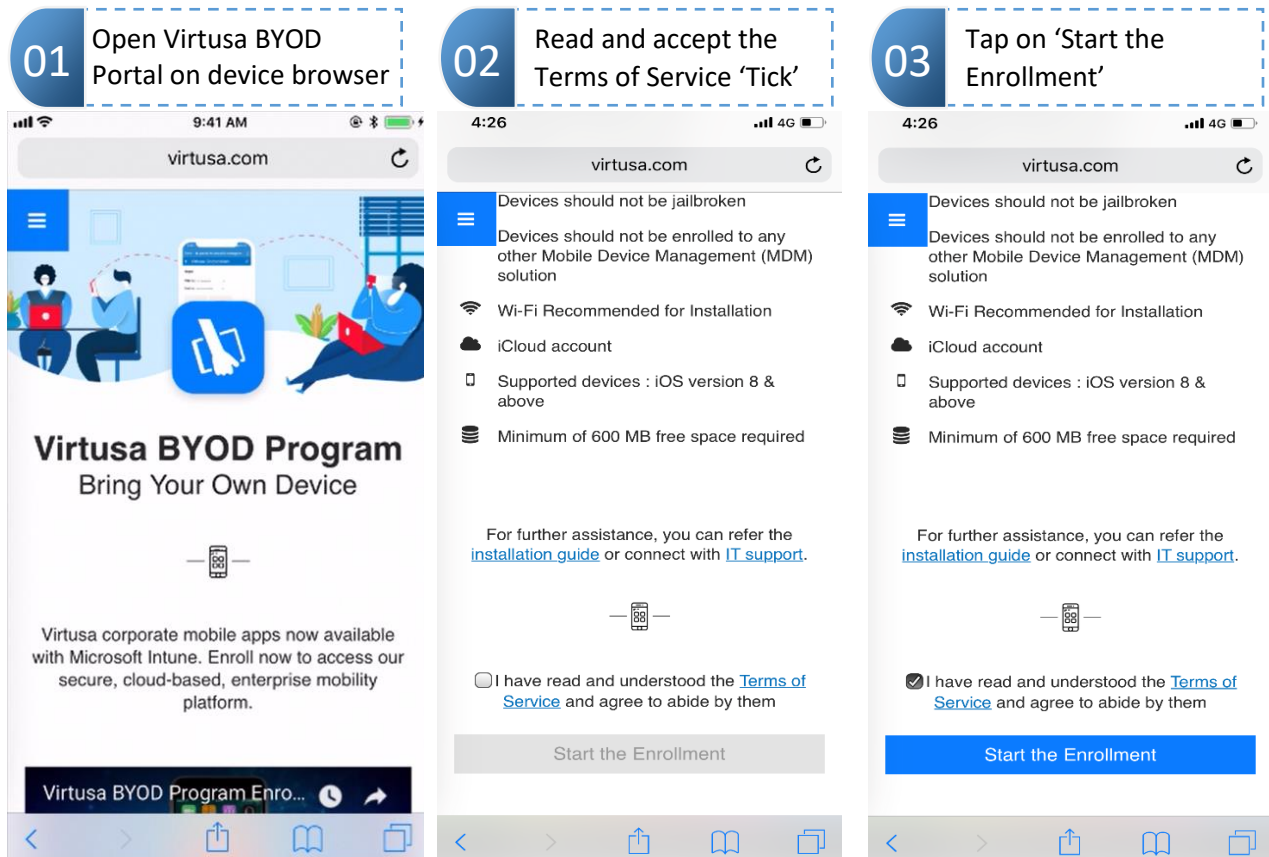


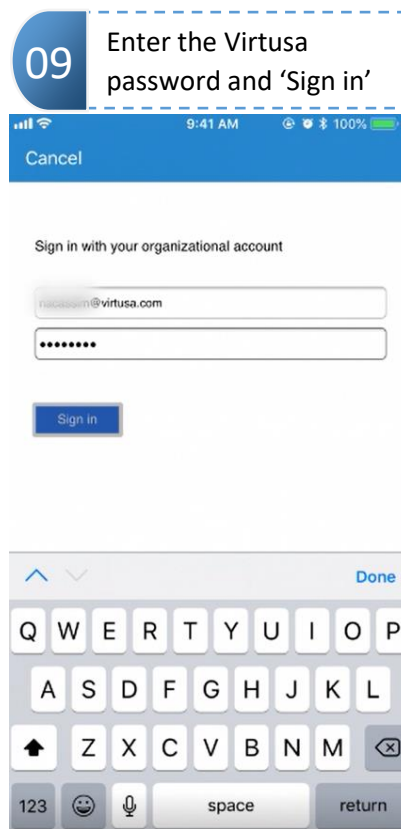
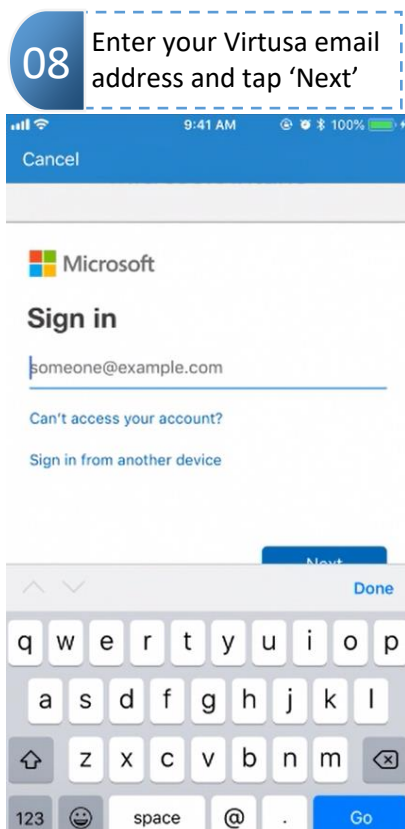
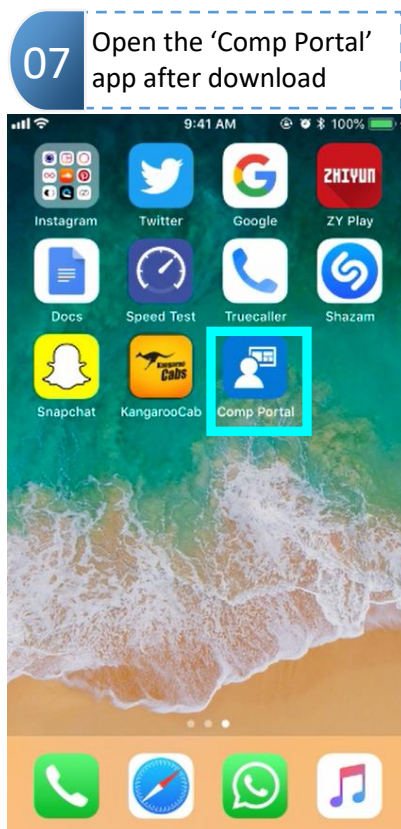
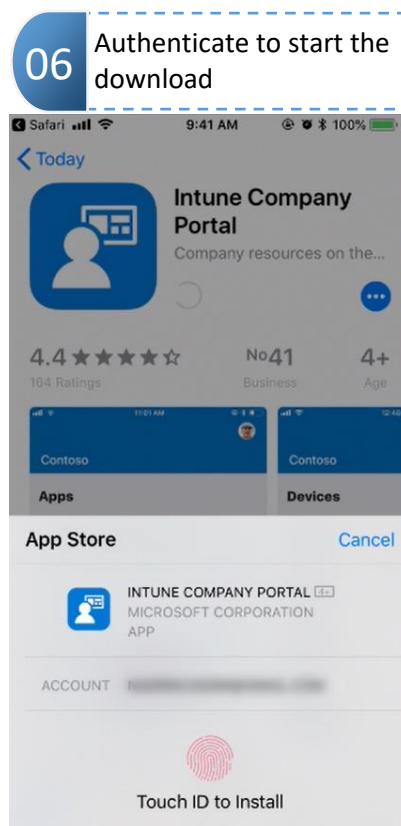
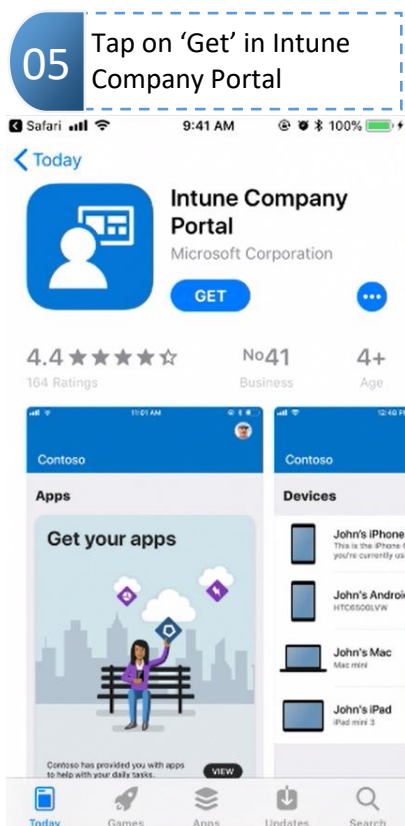
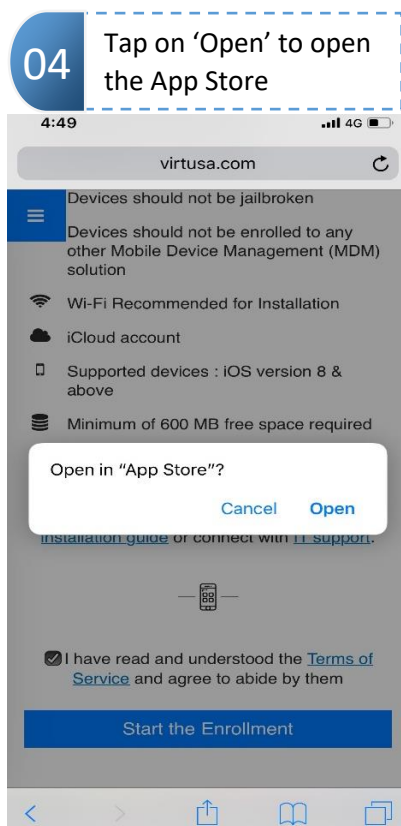
- Typing byod.virtusa.com on your mobile device browser

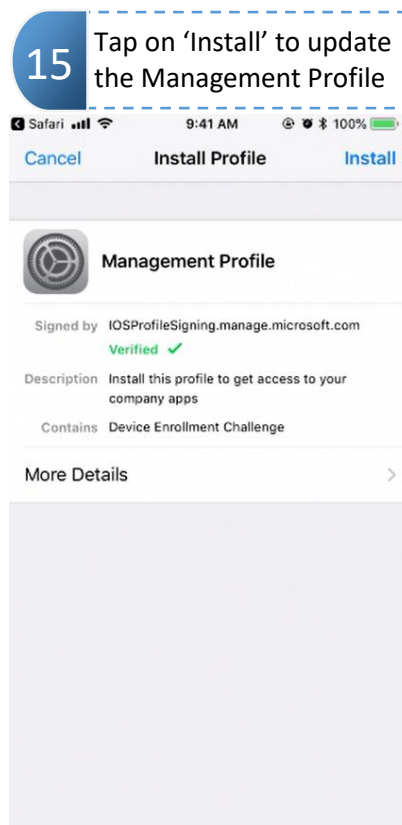
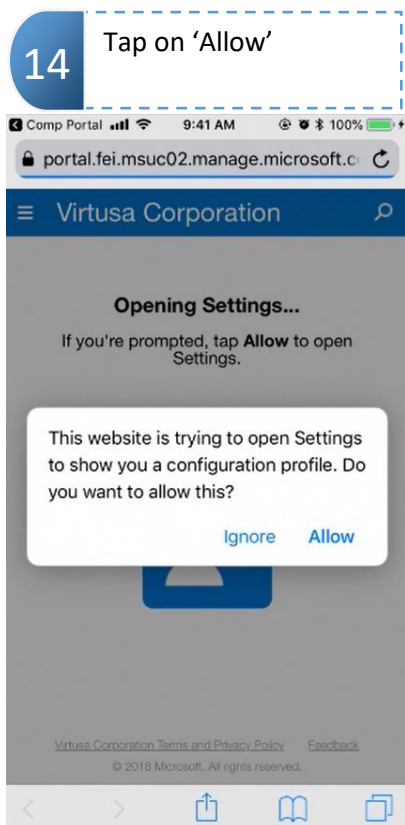
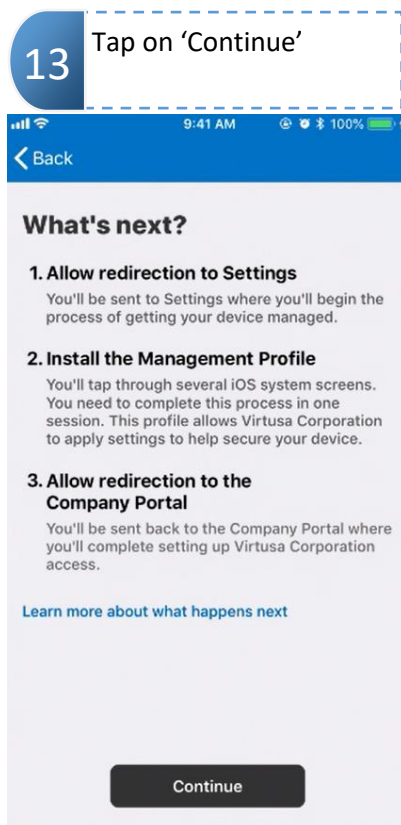
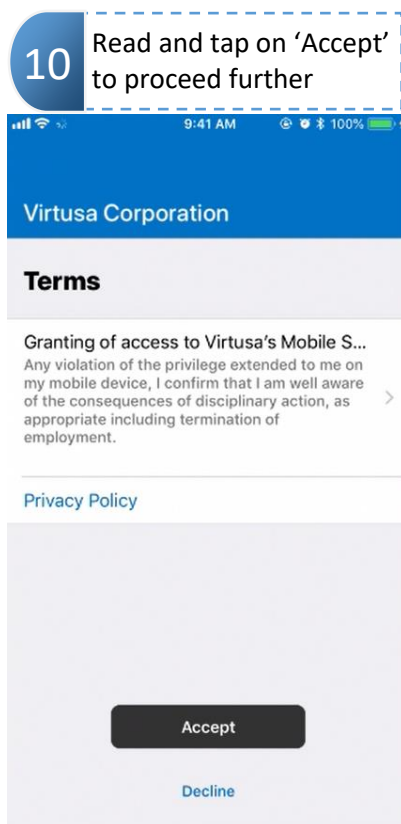
In addition to the information on default and featured apps available in the program, the BYOD portal is also equipped with videos and guides to assist you in enrolling devices.

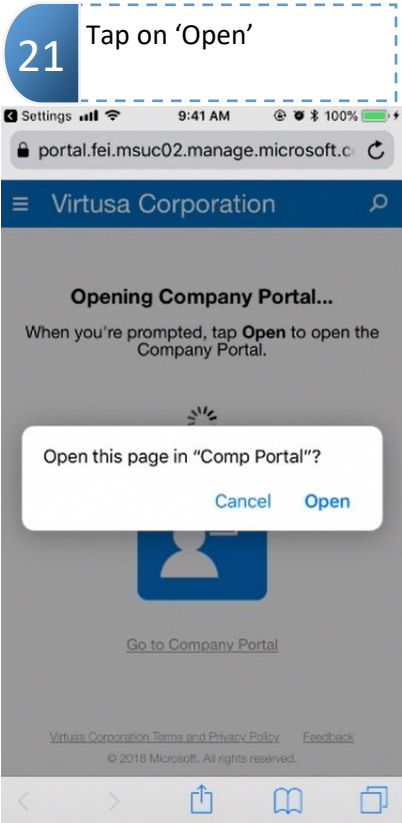
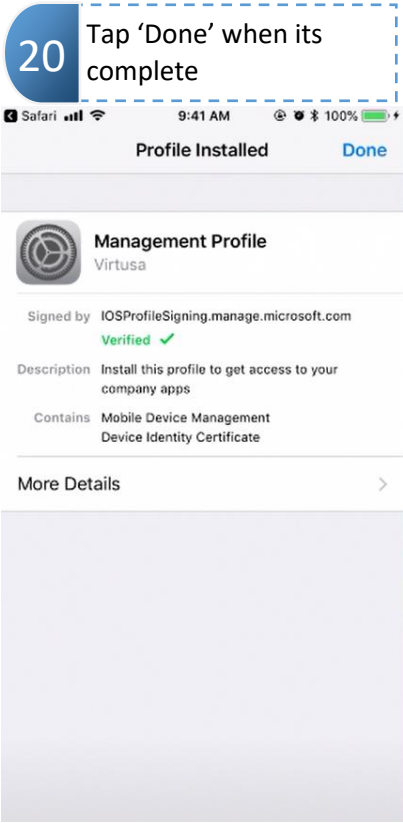
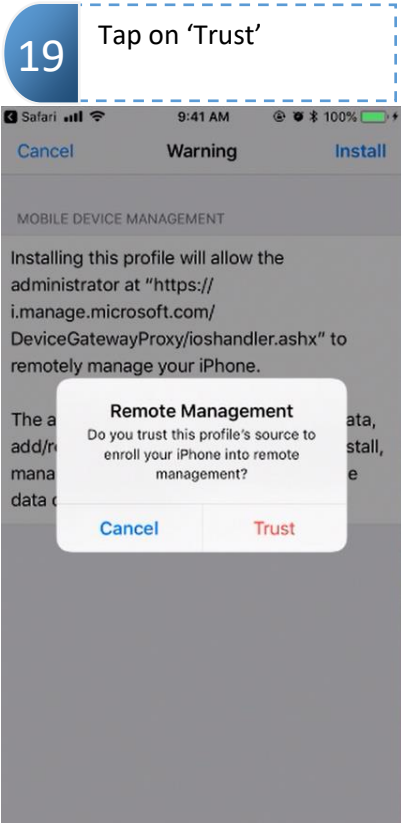
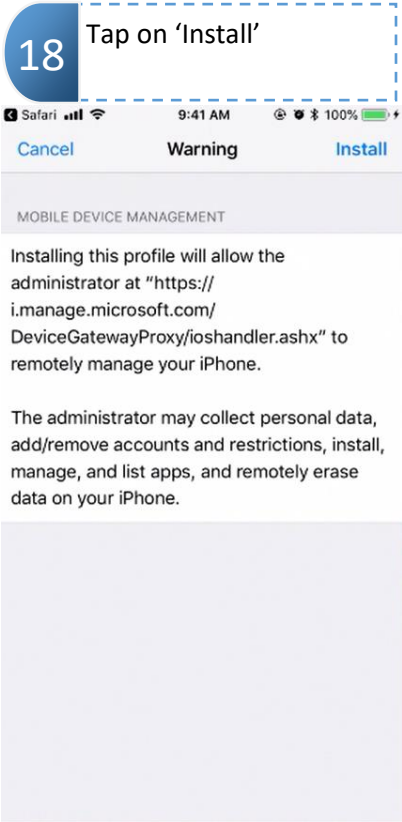
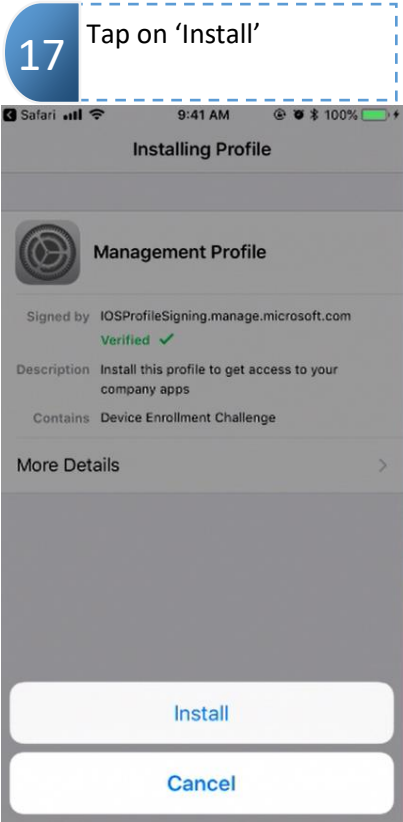
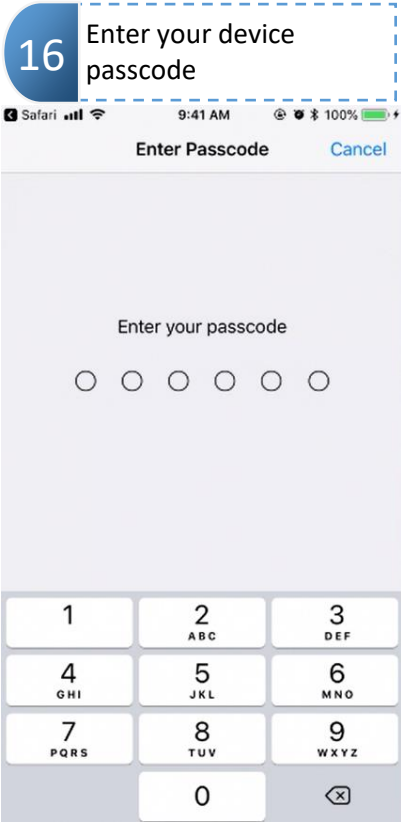
Before the enrollment process please review the terms of use available in the portal to understand what Virtusa can see and cannot see.

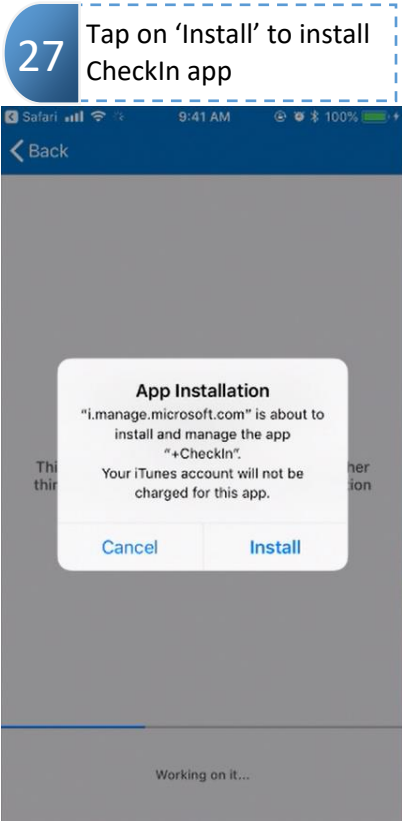
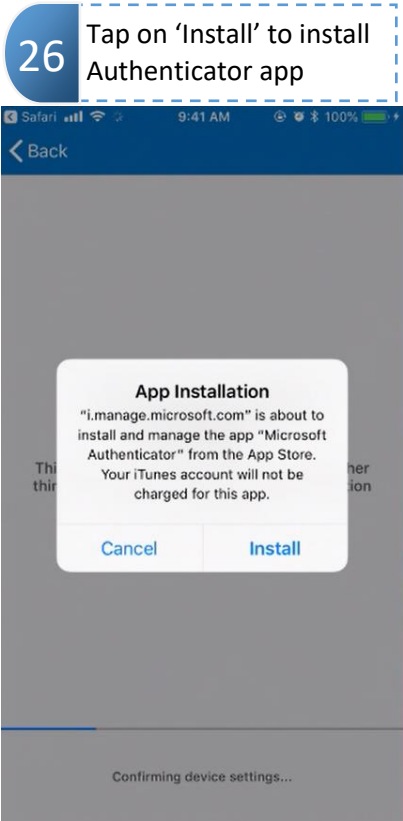
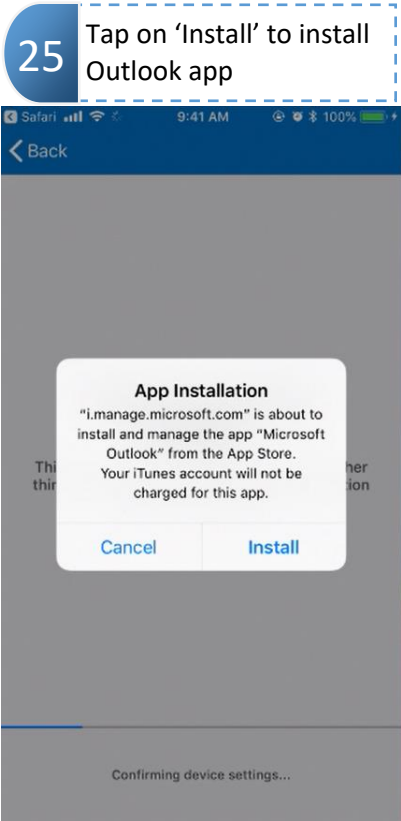
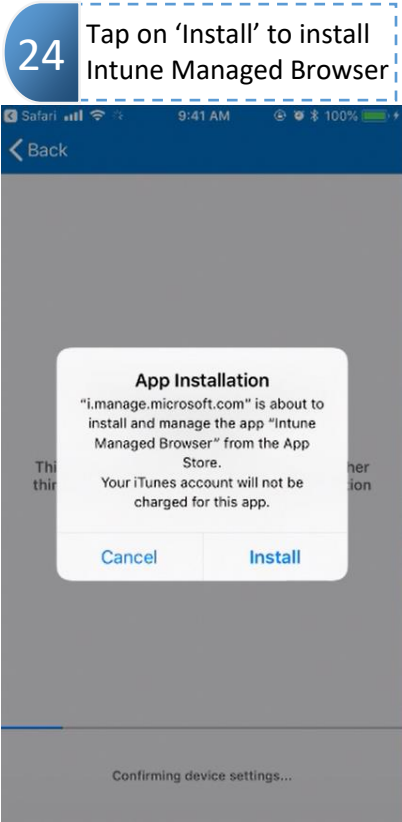
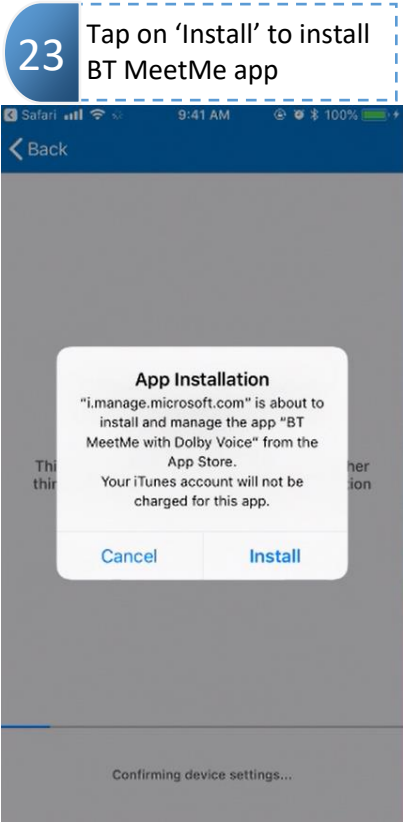
4 Intune MDM Enrollment

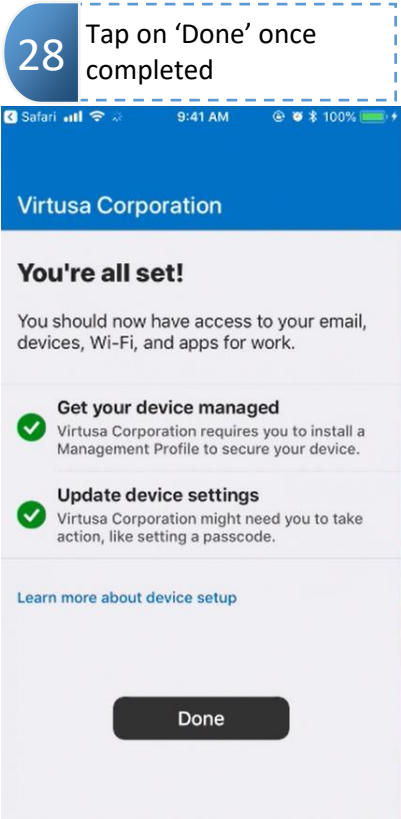












5 Access App Store for More Apps

30

Open 'Comp Portal' on your device

31

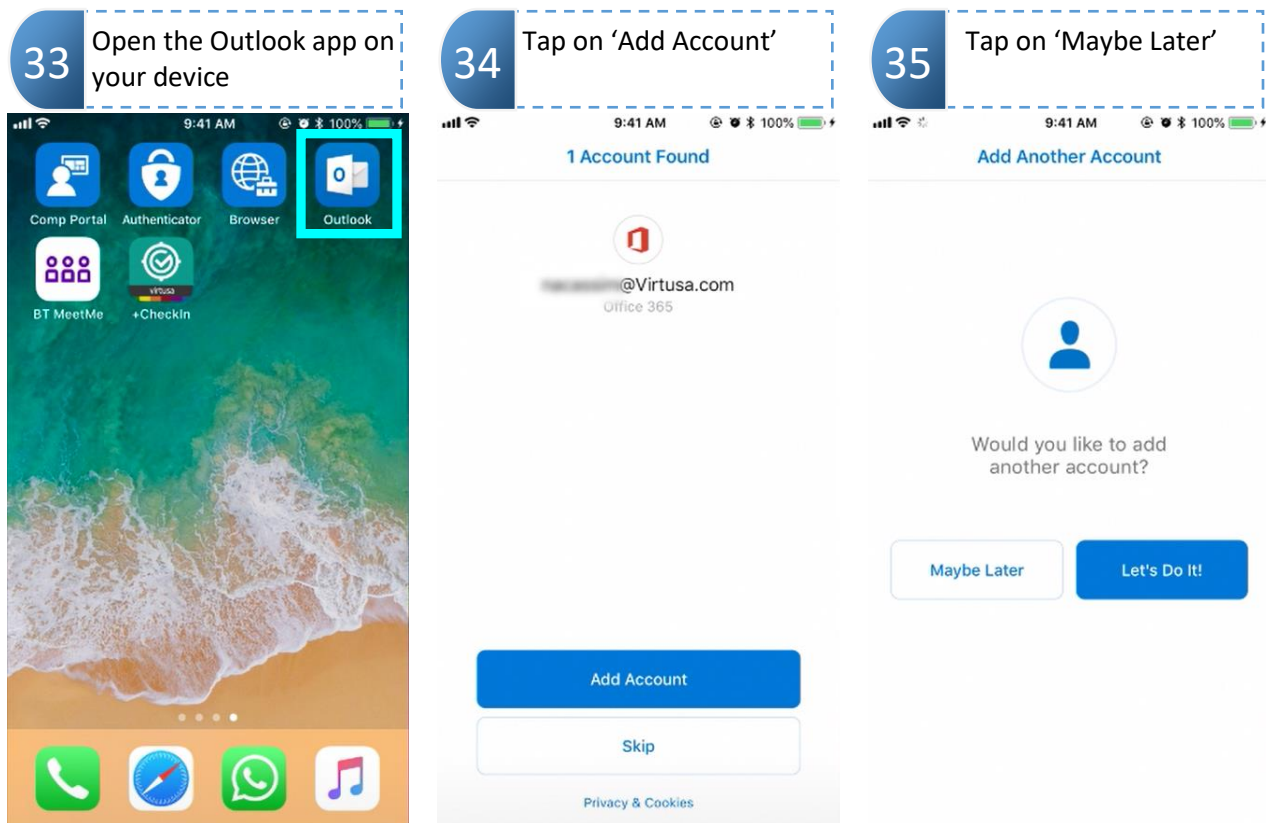
Tap on 'View'

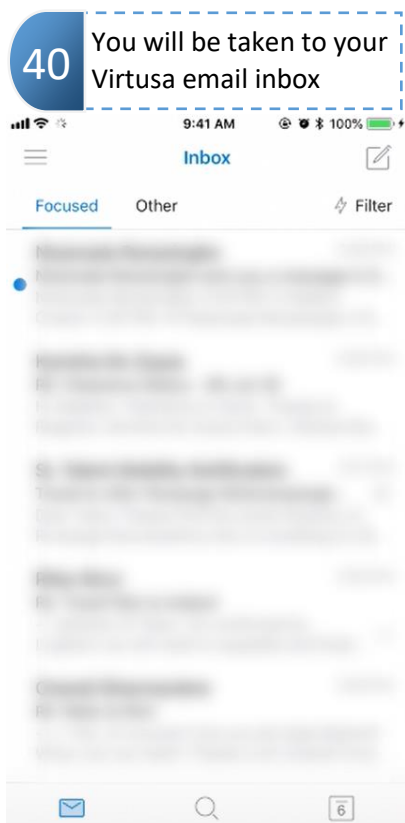
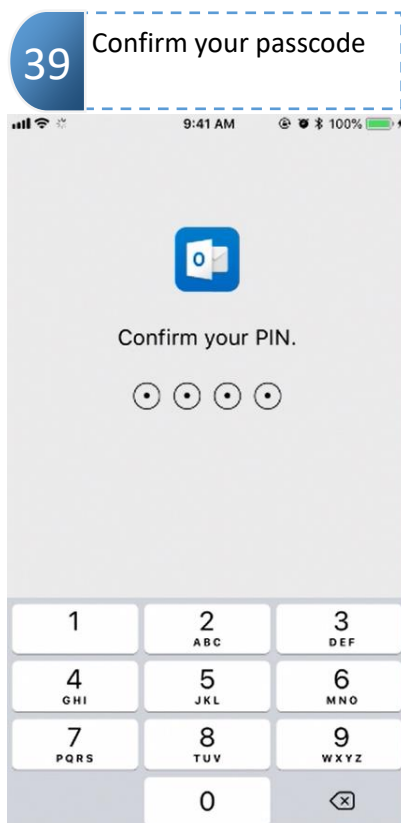
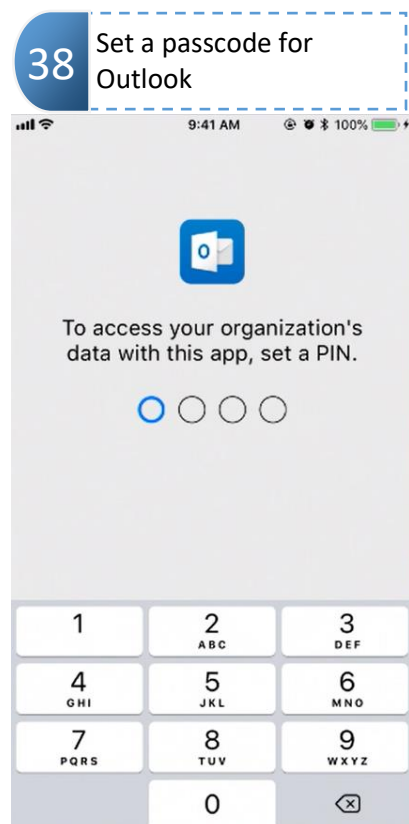
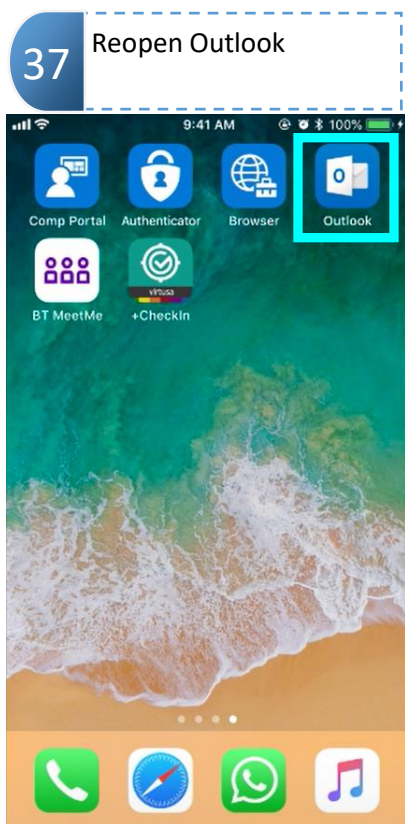
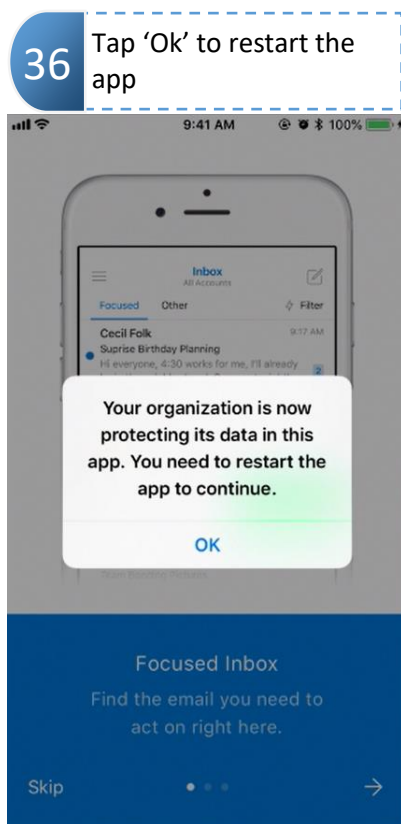
32

Scroll to access a variety of business apps

The first screenshot shows an iPhone home screen with a teal and orange wave background. A red dashed box highlights the 'Comp Portal' app icon in the top row. The second screenshot shows the 'Virtusa Corporation' app interface. At the top is a blue header with the company name. Below it is a section titled 'Apps' featuring an illustration of a person on a bench. A white box at the bottom says 'Get your apps' and 'Virtusa Corporation has provided you with apps to help with your daily tasks.' with a black 'VIEW' button. The third screenshot shows a scrollable list of Microsoft business apps, including Power BI, PowerPoint, SharePoint, Teams, Word, and Yammer, each with its logo and name.

6 Microsoft Outlook Configuration





7 Support & Feedback

