



Device enrollment for Android devices

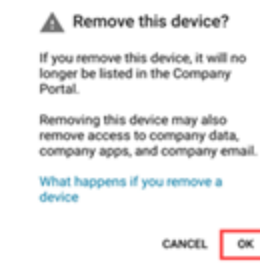
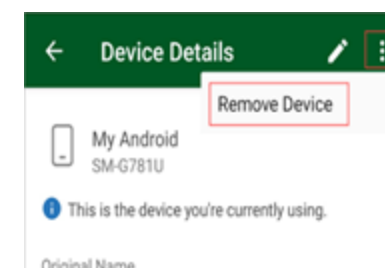
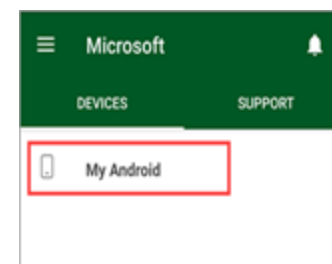
Prerequisites for enrolment

- Device OS should be updated to the latest version of Android: 13.0 or above
- Okta Verify application must be installed and configured as per the instructions provided.
- Devices should not be rooted/jail broken.
- Devices should not be enrolled with any other Mobile Device Management (MDM) solution. Follow the next steps to unenroll if your device is enrolled with any other MDM Solution.
- Configuration time will take around 20 minutes depending upon your WiFi connection.

Prerequisites for enrolment

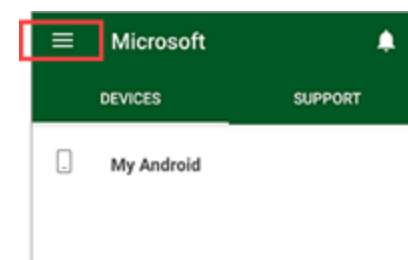
01

Open Intune Company Portal → Devices → Select your device → Tap on the three dots → 'Remove Device'.



02

Open the Company Portal app → Open the main menu → Select 'Remove Company Portal' → Click 'OK'



Steps to enroll to ManageEngine (1/2)

01

Install and configure Okta Verify application
(If not done already).

02

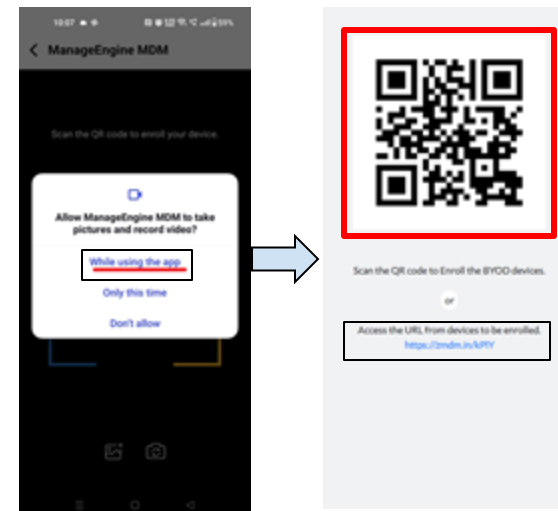
Install 'ManageEngine MDM' application from
PlayStore and launch the application.

03

Click Enrol, and then select Scan QR Code.

**04**

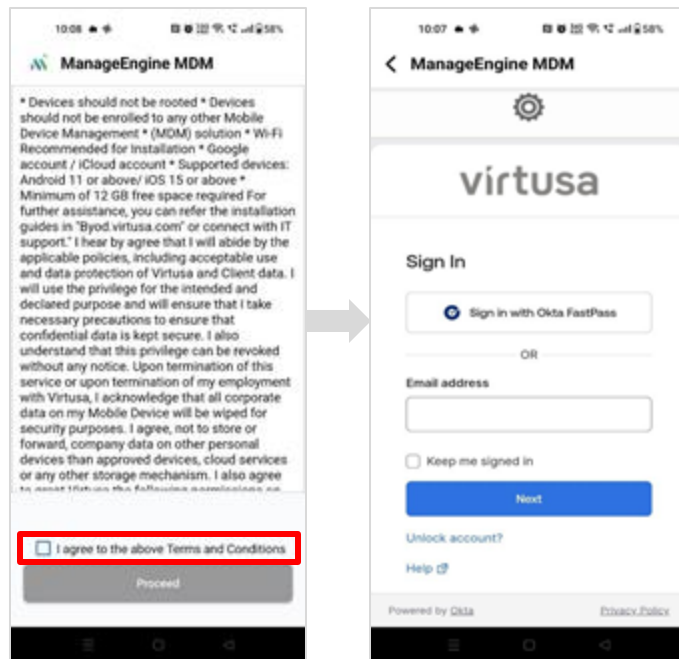
Select "While using this app" to give ME
camera access and scan the QR code or click
on the link.



Steps to enroll to ManageEngine (2/2)

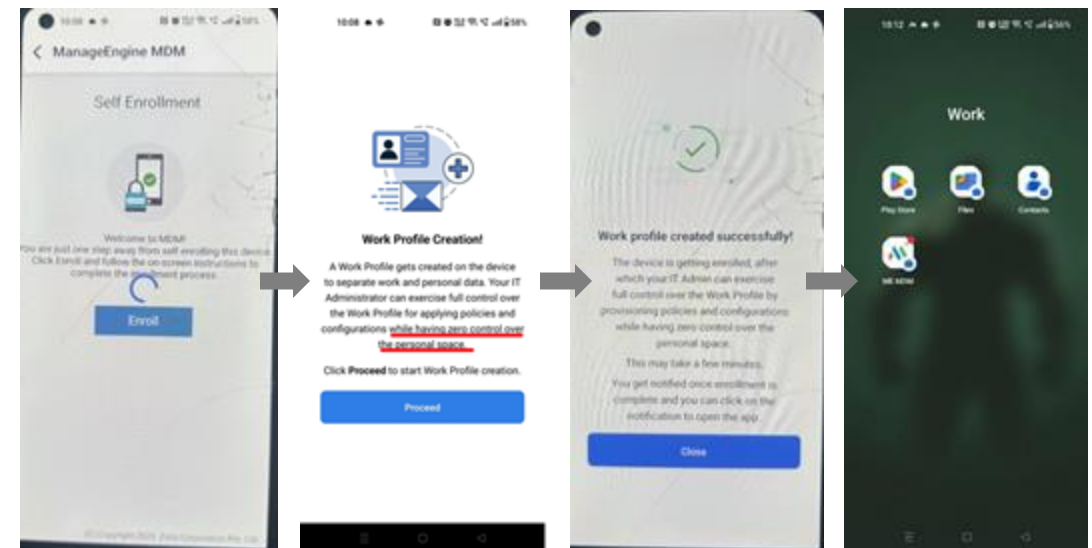
05

Select the “I Agree” check box, click on Proceed and enter Virtusa email address credentials in the OKTA Verify.



06

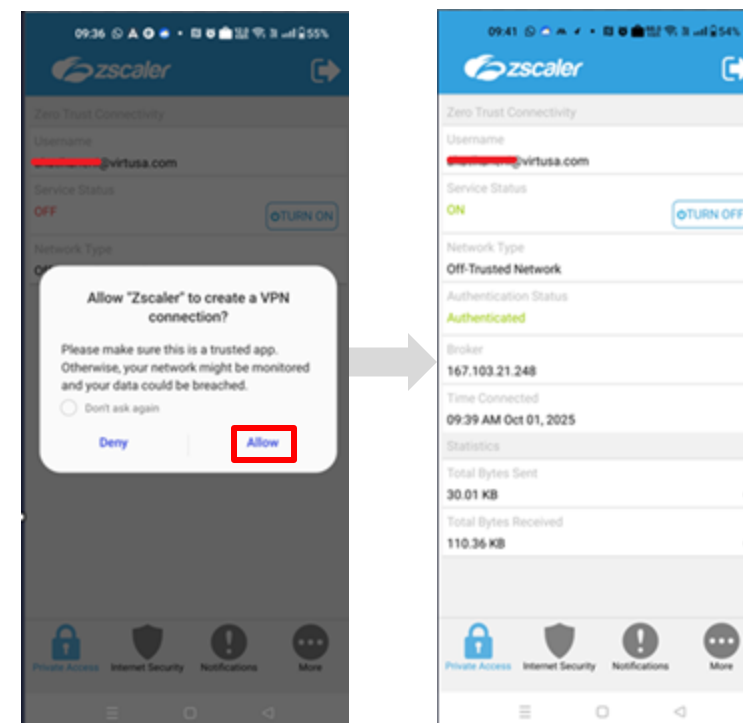
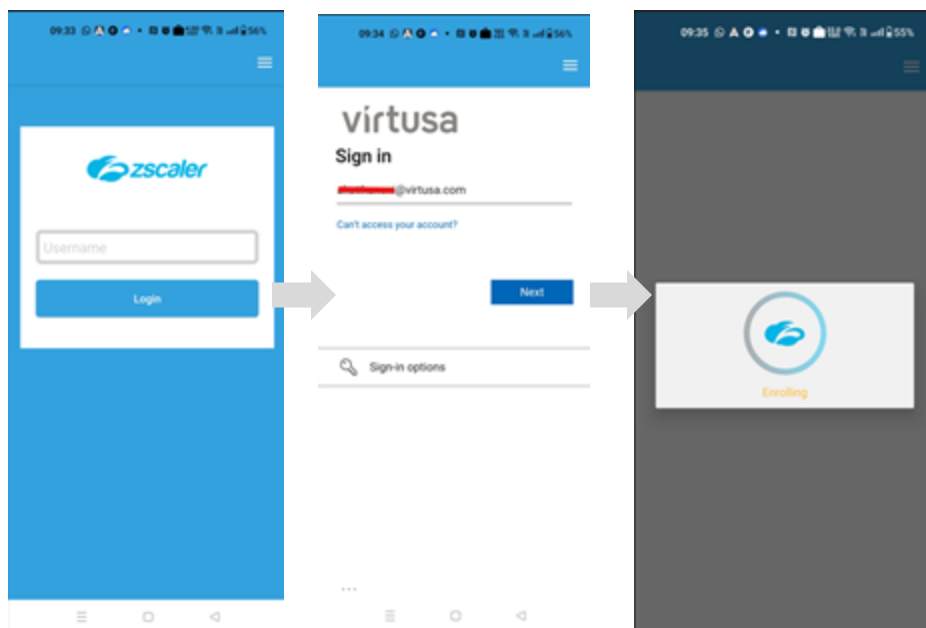
Click “Enroll Now” and set the “Work Profile”.



Additional notes

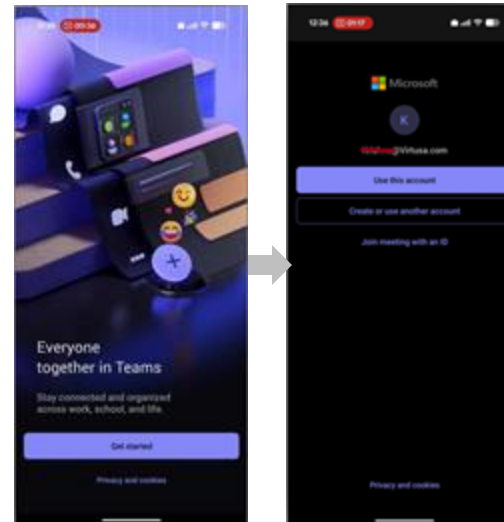
Configure Zscaler Client Connector and sign in with MS Authenticator (You can install it from ME APP Catalog if not installed already and configure)

Click 'Allow' for Zscaler to create the VPN connection.



Additional notes

- It is mandatory to configure Work Profile Password / Pin .
- Virtusa Mandatory apps will be installed automatically. You can access the downloaded apps in your phone's work profile section.
- Configure Okta Verify app in Work Profile and remove Okta Verify app from personal profile if present.
- Zscaler must be authenticated using Microsoft Authenticator.
- Teams App configuration steps :
 - Configure the MS Authenticator app.
 - Open Teams application, click “**Get Started**”.
 - Enter your Virtusa account credentials and configure.



In case of facing any issue while enrolling the device, then reach out to : **anytimeservicedesk@virtusa.com**.

Android Gmail login process

ME MDM device enrollment

01

You can refer to the “**Virtusa - Mobile Device Enrollment guide**” for step by step process.

02

Once the enrolment is finished, Virtusa apps will be installed automatically. You can access the downloaded apps in your phone's work profile section.

Sign in into your Gmail account

01

Open the Gmail application on your phone and click on **Add Email Address**.



02

Enter your email address and click **next**.

03

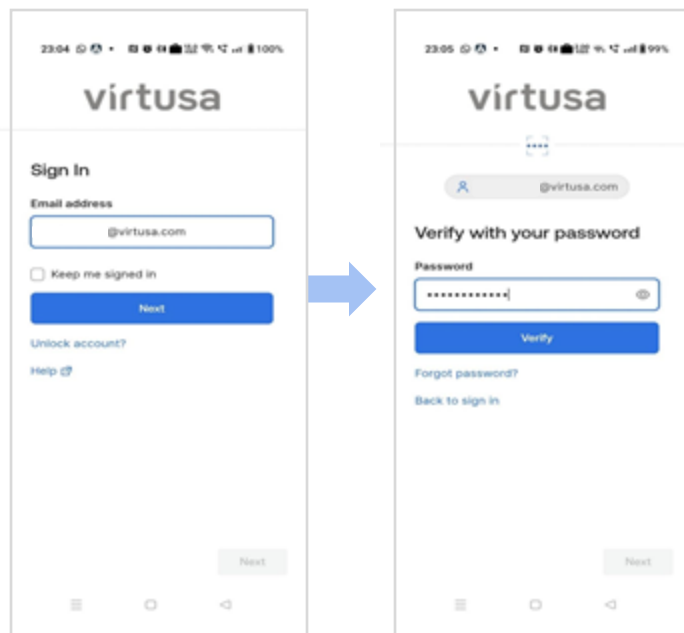
You will be redirected to Identity portal.



Complete the MFA process

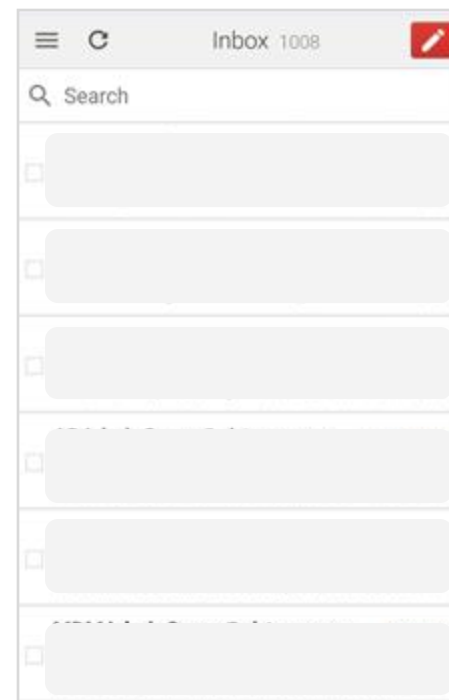
01

Enter your email address and password, click on **Verify**.



02

Complete the Okta verification and you'll be logged in into your Gmail account.





Thank you