

# BYOD enrollment

User-guide for Android devices

**VERSION 2.1 – 11<sup>TH</sup> APRIL 2025**



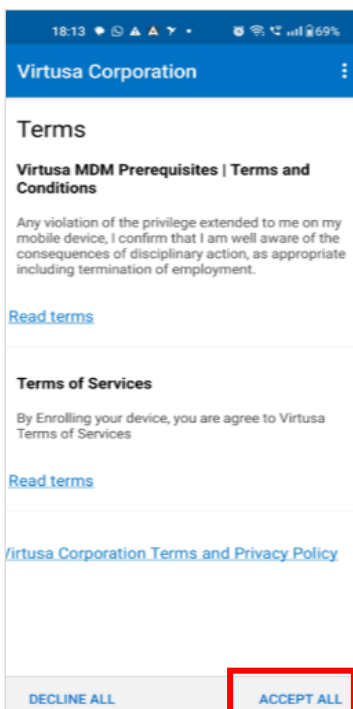
# 1. Prerequisites for enrollment

- Device OS should be updated to the latest version of Android: 13.0 or above.
- Devices should not be rooted/jail broken.
- Devices should not be enrolled with any other Mobile Device Management (MDM) solution.
- An iCloud ID is required, and Wi-Fi connectivity is preferred for enrollment.
- Configuration time will take around 15 minutes.

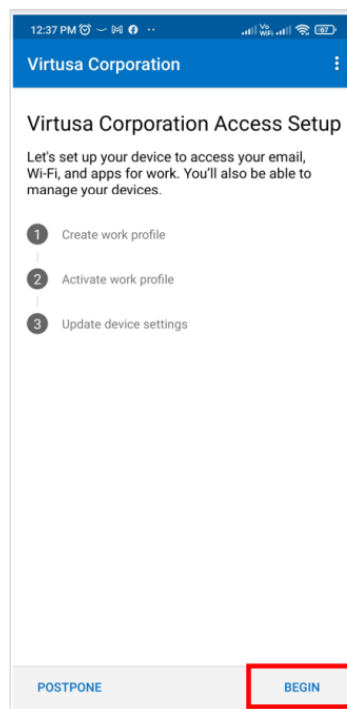
## 2. Enrollment steps

**Step 1:** Install the 'Intune Company Portal' app from the Google Play Store, and sign in using your Virtusa username (email ID) and password.

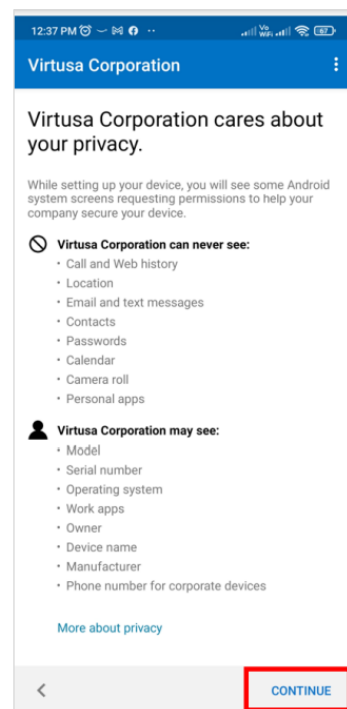
**Step 2:** Read and tap on 'Accept all' to proceed further.



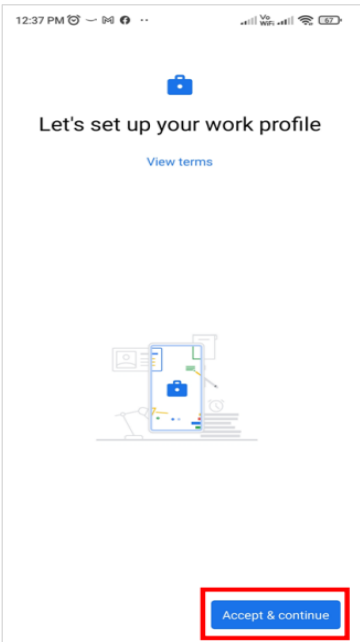
**Step 3:** Tap on 'Begin' to start the configuration



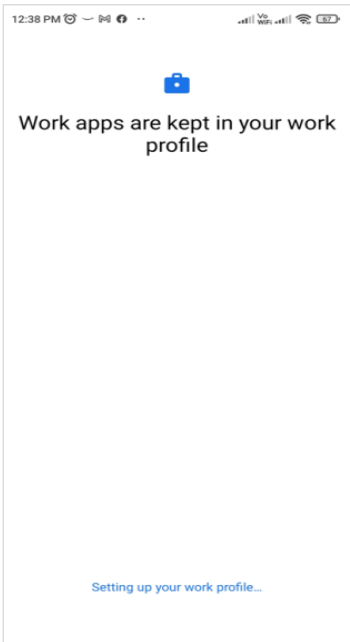
**Step 4:** Tap on 'Continue' to proceed.



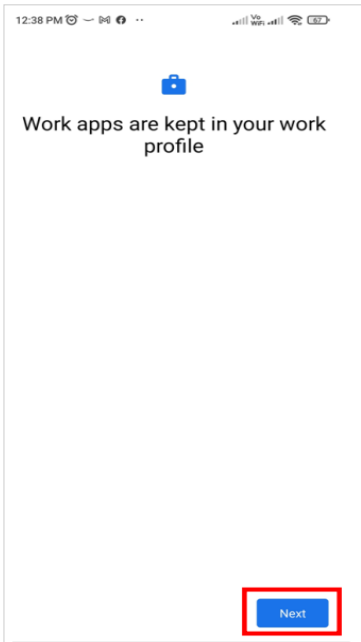
**Step 5:** Tap on 'Accept & continue'



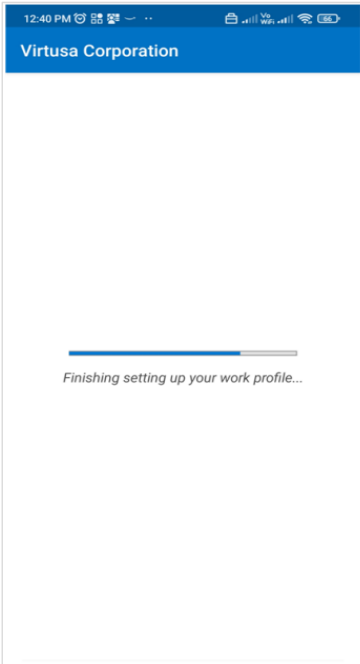
**Note:** Your work profile will begin setting up.



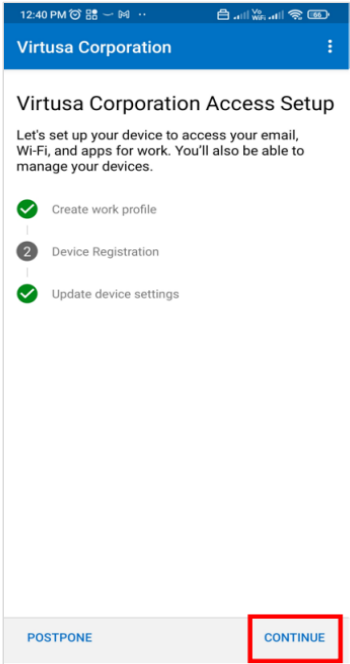
**Step 6:** Now tap on 'Next'



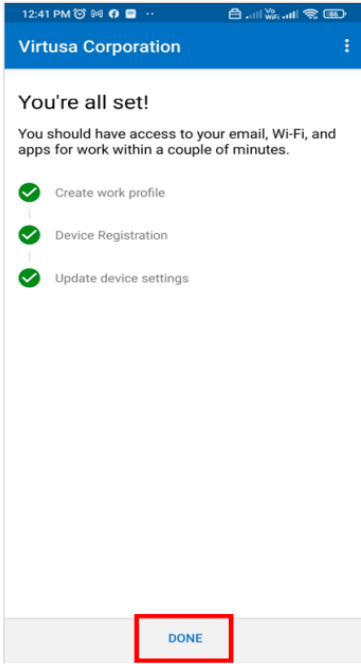
**Note:** Your work profile will complete its set up.



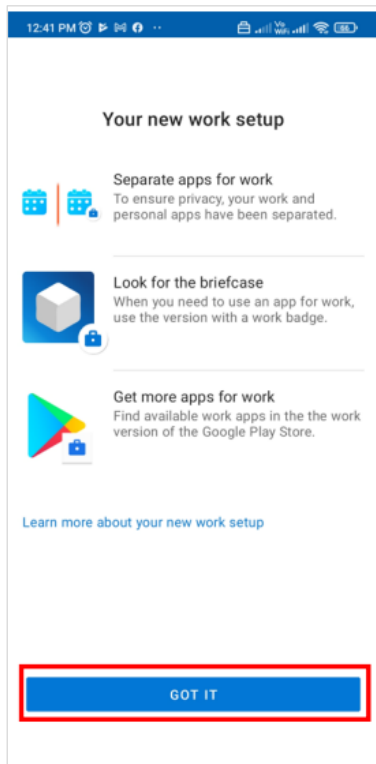
**Step 7:** Tap on 'Continue'



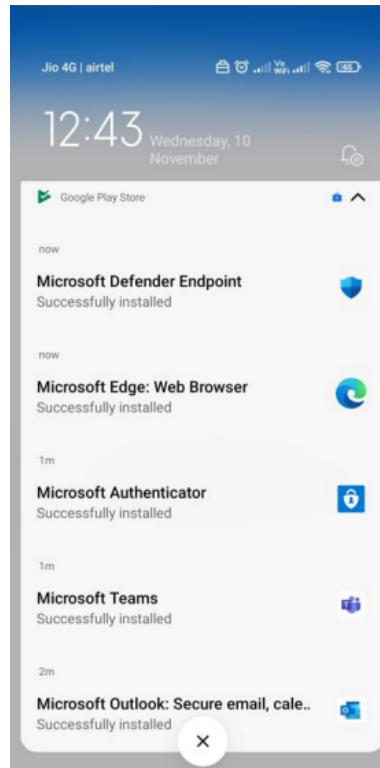
**Step 8:** Tap on 'Done' to complete the process.



**Step 9:** Tap on 'GOT IT'



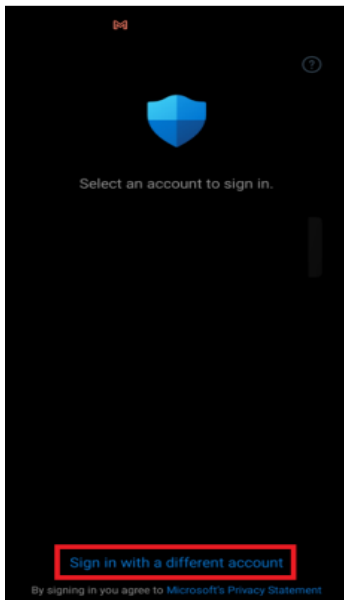
**Step 10:** The default company apps will now be installed on your mobile.



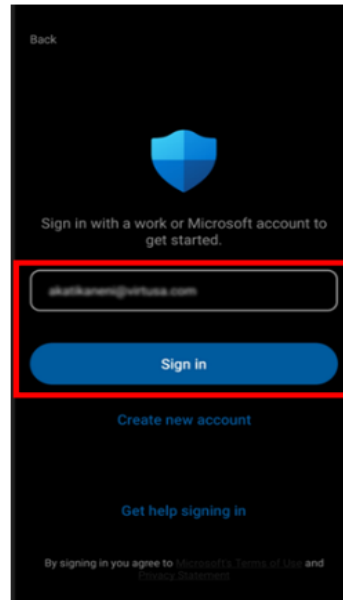
**Note:** You'll be prompted to install the default Virtusa apps [Edge, Authenticator, Teams, Outlook, and Microsoft Defender]. Microsoft Defender is mandatory for Tier 0, 1, 2, and 5 employees. Tier 3 and 4 employees can skip the Defender installation steps, as they are not eligible.

### 3. Microsoft Defender configuration steps

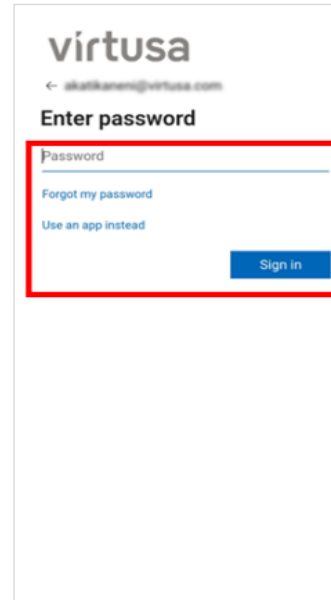
**Step 1:** Open the Microsoft Defender app and tap on 'Sign in with a different account'



**Step 2:** Enter your Virtusa username (email ID) and tap 'Sign in'



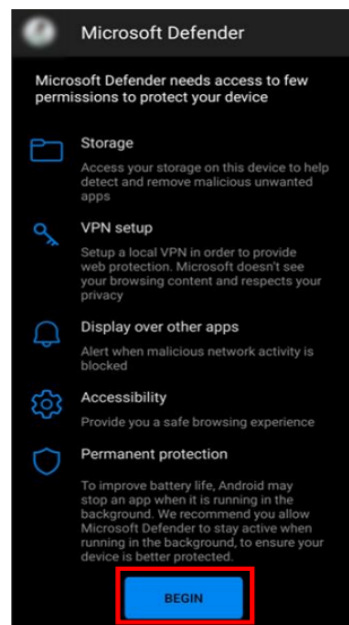
**Step 3:** Enter your Virtusa password tap 'Sign in'



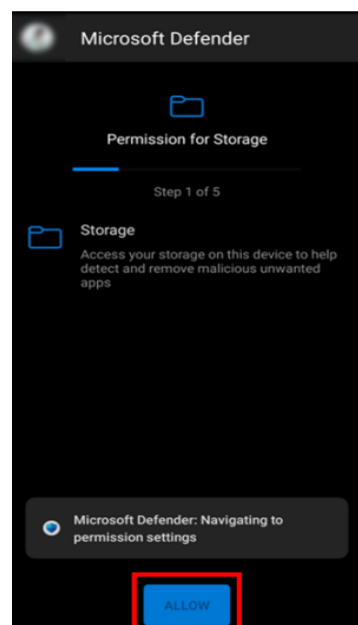
**Step 4:** Accept the license terms.



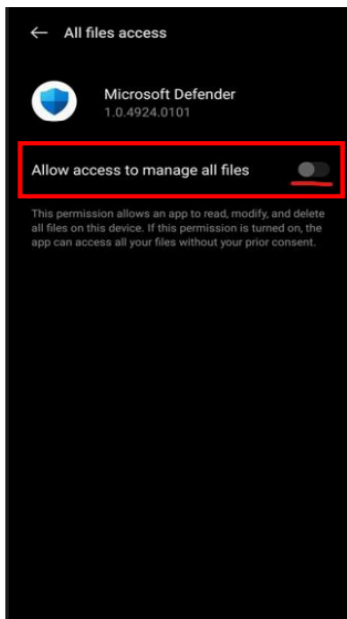
**Step 5:** Tap on 'Begin'



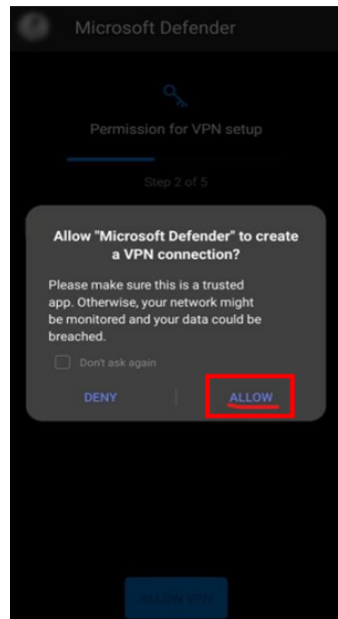
**Step 6:** Tap on 'Allow'



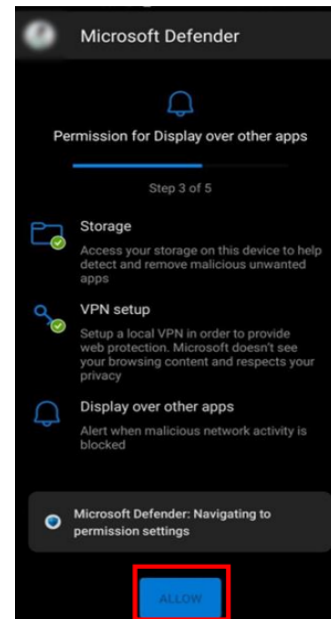
**Step 7:** Enable the 'Allow access to manage all apps' button.



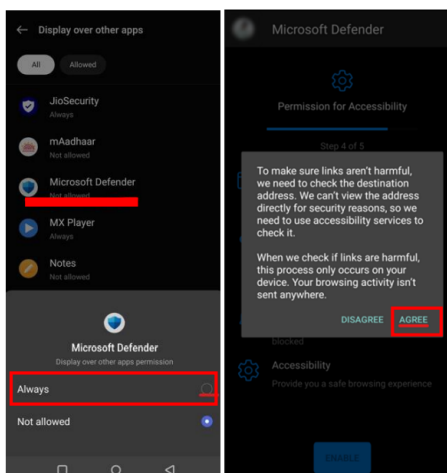
**Step 8:** Tap on 'Allow' to enable VPN settings.



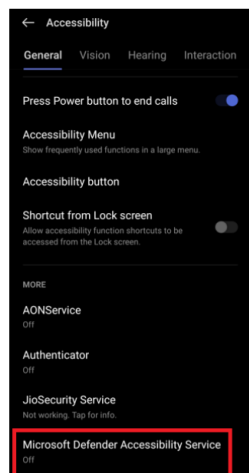
**Step 9:** Tap on 'Allow' to enable other permission settings.



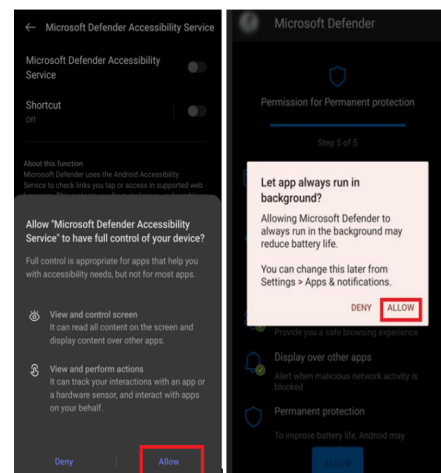
**Step 10:** Step 10: Select 'Always' and then tap on 'Agree'



**Step 11:** Select 'Microsoft Defender Accessibility Service'



**Step 12:** Then tap on 'Allow' again to enable it.



**Note:** Your device enrollment is now completed. Open the Defender app and check if it is showing as 'Device is Protected'. You can also search for additional Virtusa apps in the Company Portal app and install them as needed. For more information, visit [byod.virtusa.com](https://byod.virtusa.com).